

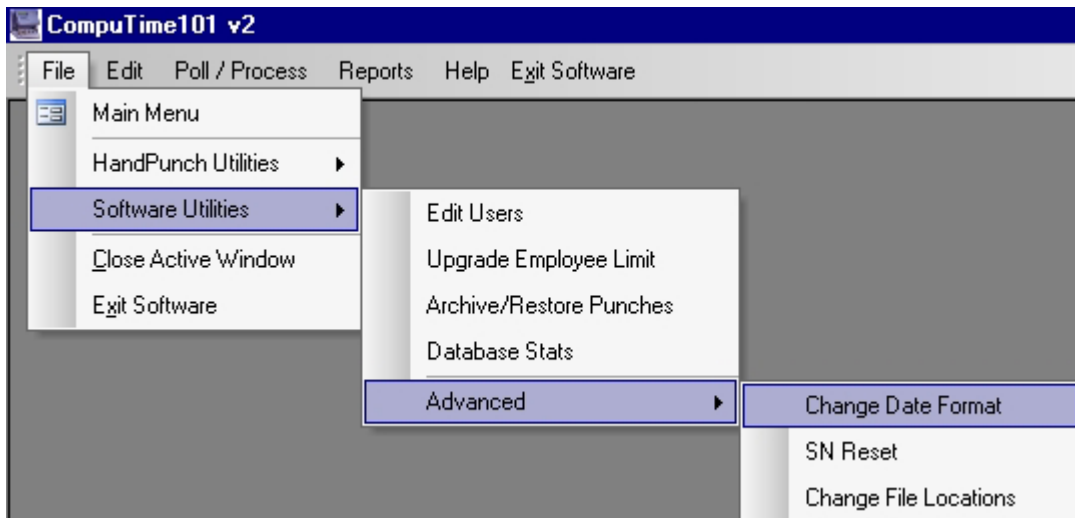
Compumatic Time Recorders, Inc.

CompuTime101



Instructions for international date formats.

The CompuTime101 software is set to use the English (United States) date format of Month/Day/Year. If the software is installed on a computer using a Day/Month/Year regional setting an additional option must be enabled during the initial setup. Once the software is installed, select the Change Date Format option from the File → Software Utilities → Advanced menu (as shown below).



Short Date formats other than Month/Day/Year or Day/Month/Year are not supported. The Long Date format is flexible. A slash (/) is the recommended date separator. Using AM and PM symbols is also recommended. The decimal symbol for numbers should be a period.